

## THE CROWN JEWEL HORSE TRAIL - connects – PITKIN/GLASSIER EQUESTRIAN TRAIL



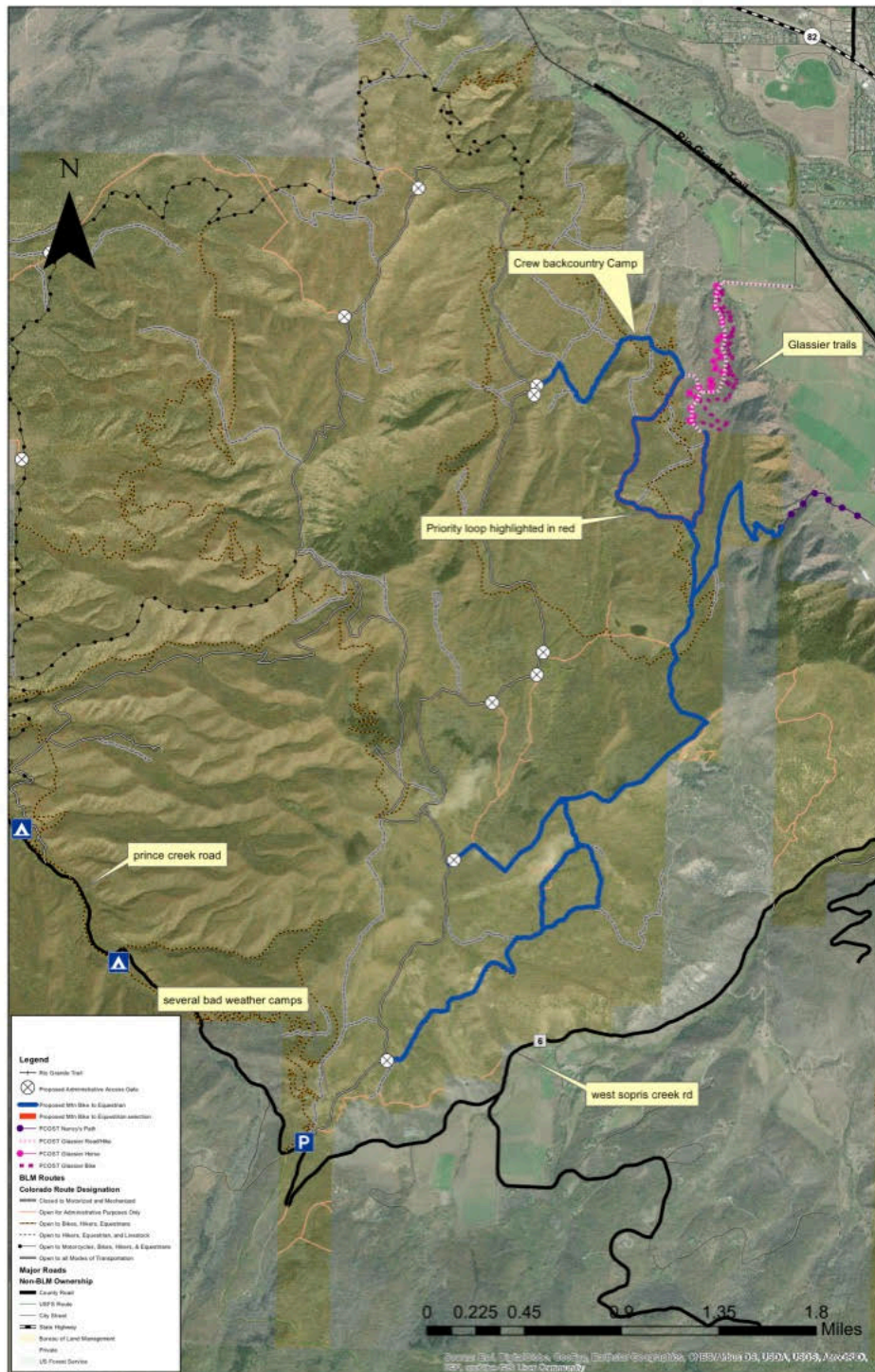
Photo by Louisa Davidson

The Crown Jewel Horse Trail connects to the Pitkin/Glassier Equestrian Trail for an 8.5 mile, 4 hour ride with a 30 minute stop for lunch. Pictured here are Roaring Fork Valley Horse Council members: Barbara Maxson, Holly McLain, Susan Cuseo and Jasmine Pierce pictured at the BLM's Divide Parking lot departure site. On 9/21/2020 - they successfully rode the entire trail connecting to the Glassier Equestrian Trail on the other side of the Crown. Horse trailers were shuttled from the Divide Parking Lot to Glassier Parking Lot.

Synopsis: Heading East from the BLM Divide Parking Lot, riders come to a large green gate next to a cattle guard. The chain latch on this gate is low, so most riders will dismount to go through the gate. The Crown Jewel Horse Trail starts on your right a little ways down the trail, through a well-marked, 4 foot green gate. Once on the trail, signs direct riders along the way.

Note: There is also a loop option of this trail taking you back to the Divide Parking Lot. Follow the signs onward to the ridge, then continue on past Nancy's Trail (on your right) for connection to the Glassier Equestrian Trail.

# BLM MAP



(P) - Parking at the BLM Divide lot between Prince Creek and West Sopris Creek. Then the blue route is the Crown Jewel Horse Trail showing the simple loop returning to the Divide. The other blue route takes you past the Nancy's Trail marked in maroon/dark purple dots, or go on across the Crown and connect (shown in bright pink) with the wonderful equestrian / hiker only "Pitkin Glassier Equestrian Trail."



Heading up from the Divide



Beautiful Mt. Sopris always in view



High atop the ridge fall colors surround us. Photo taken by other equestrians out for a day ride. They heard us first, then spied us above. We are visible at the top right side of photo showing the vast magnificence of this hiker/horse only trail.



Going towards the ridge and the new trail improvement work area (done by The Youth Corps, RFVHC & RFOV)

The Crown Jewel Horse Trail is well marked with the exception of the right hand turn hidden by a large serviceberry bush, which hides the large brown gate taking you to the ridge and on past the Nancy's Trail turn off, then directly to the Glassier Equestrian Trail. BLM will add a Carsonite trail sign for proper wayfinding.

There is no water for horses on this trail. We carried water in our horse trailers and horses gladly drank from buckets at trail's end in the Hooks Spur/Glassier Parking lot.

This connecting trail system is made possible by cooperation between Pitkin County OST, BLM and the RFVHC. We are thankful that this equestrian / hiker only trail system offers a predictable, peaceful experience without fast moving mountain bikes.



Glorious day with Mt. Daly & Capital Peak in the background



Going through the hidden gate leading to the ridge near the Stone Road and the Youth Corp/RFOV trail improvement section  
(signage will be added for easy wayfinding)



Riding the ridge to the improved section of trail – Stone Road is in the distance



4 ft. gate marked Crown Jewel Horse Trail



Headed Home



Unexpected autumn purple aster blooms along the trail



The Pitkin Glassier Equestrian Trail



What a great way to end the ride - gentle switchbacks with good footing on the Glassier Equestrian Trail



Camaraderie of friends, good horsemanship and nature's beauty make this a special day on the very special Crown Jewel Horse trail connection to the Glassier Equestrian Trail.

We are proud that the Crown Jewel Horse Trail and the Pitkin Glassier Equestrian Trail offers users a kind exploration without fast moving mountain bikes. The anticipated and assured reality for horseback riders and hikers, starting from the beginning of the trail at the Divide Parking Lot to the end of the trail at the Hooks Spur/ Glassier parking Lot is necessary for a complete, no-conflict, peaceful trail ride.

The mountain bikers have thousands of miles of bike trails in designated Special Recreation Management Areas (SRMA) such as Red Hill, Sky Mountain Park, most of Crown Mountain, and others. The RFVHC is confident that the mountain bikers can regulate, supervise and enforce themselves, so that they are successful with safety on all of their existing up-hill and down-hill trails. The existing hiker/horseback rider trails should remain bike free.

The RFVHC asks that you keep a balance for protection of the wildlife and the preservation bequest for our Western Heritage.

**THE EARTH IS WHAT WE ALL HAVE IN COMMON –  
We share this world in balance with the wildlife for a better future.**

Respectfully Submitted,  
RFVHC Board of directors