



ROARING FORK VALLEY HORSE COUNCIL

P O Box 127

Snowmass, CO 81654

www.rfvhorsecouncil.org

2/26/2018

To the Pitkin OST Board and Staff,

This document is meant to aid Pitkin OST in writing a comprehensive letter to the BLM regarding the existing BLM Crown Road # 8320 Parking area (Middle Country Parking Lot), as the desired location for equestrian truck and trailer parking. We have included photos of this parking area with descriptions and a map for help in understanding where the lot is, and what must be done to make it truck and trailer friendly.

At the February 22, 2018, meeting for Prince Creek, Bull Pen Parking held at the Red Brick Building in Aspen, the RFVHC Members presented the desire to have this (Middle Country Parking Lot) for equestrian use. The OST Board and Staff were enthusiastic about the idea. The neighbors present were in favor, and Mike Pritchard of the RFMBA said he would support this plan.

At this same meeting, Pitkin County Manager, Jon Peacock made a suggestion that a portion of the Bull Pen area may be reserved for truck and trailer parking in the future, if needed. He recommended that the extra Bull Pen Land should not be sold. The RFVHC agrees with this recommendation.

The Roaring Fork Valley Horse Council is very pleased that Pitkin OST Board and Staff were receptive to the idea of truck and trailer parking for equestrians midway up the Crown in the area on the existing BLM Crown Road # 8320 Parking Lot. (Middle Country Parking Lot)

This new parking solution could satisfy all multi-trail partners and neighbors, because trucks and trailers will be parked in the Middle Country Parking Lot, and not in the Bull Pen Parking area at this time. The mountain bikers will also be happy. Mike Pritchard was supportive of the upper parking for equestrians, which will reduce potential trail conflicts. Horseback riders will be very pleased because they will be able to park easily and access the beloved Middle Country Crown Road Trail System.

Hikers and horsemen will enjoy their symbiotic association for riding and hiking in the Middle Country with good line of sight for everyone to see any on coming mountain bikes. This solution is excellent for all trail partners. Finally, BLM and

Pitkin County will have peace of mind, knowing that all multi-trail users are welcomed and included.

This Middle Country Parking Lot area will need improvement to accommodate the turn off from Prince Creek Road into the parking area, as well as excavation work to enlarge the lot for trucks and trailers to turn around and park, facing out. The Horse Council feels that improvements be geared only toward making enough space and without any unnecessary amenities. This Parking area is within the BLM mid-way up the Crown with no adjacent neighbors. No landscaping, no curbs, no irrigation are necessary. We understand reasons for these improvements at the Glassier parking lot, which we love. However, these enhancements are not needed for horses and perhaps, detrimental in the long run due to expense for both construction and maintenance, and could create possible hazards.

Thank you in advance for writing a strong letter from Pitkin County to the BLM in support of equestrian parking on the Crown for the Middle Country Parking Lot.

The BLM letter written Feb 21, 2018 clearly mentions two items of concern.

1. Safety for all user groups. The RFVHC is working with Pitkin OST and RFMBA in a multi- use trail safety campaign, which will be put forward this summer. Trail safety is imperative for our members and all of our trail partners.
2. BLM's reliance on community partners, such as Pitkin OST, for assistance in the management of recreation use surrounding and within the Crown SRMA. Clearly Pitkin County OST is in a position to play a significant role in planning decisions made by the BLM.

The RFVHC is concerned about the BLM financially stepping up to offer this parking area that is suitable for trucks and trailers. So, for this project to become a reality, the Horse Council would like to help with fund raising efforts to support this equestrian parking. We are encouraged that Pitkin County OST said that they will consider giving financial support for this project.

Below, please find a complete description with maps and photos of this desired parking area. This parking area is most ideal for horseback riders because it is directly on the trailhead to the two track, Crown Road # 8320, which has been the most beloved trail riding for our equestrian community for many years.

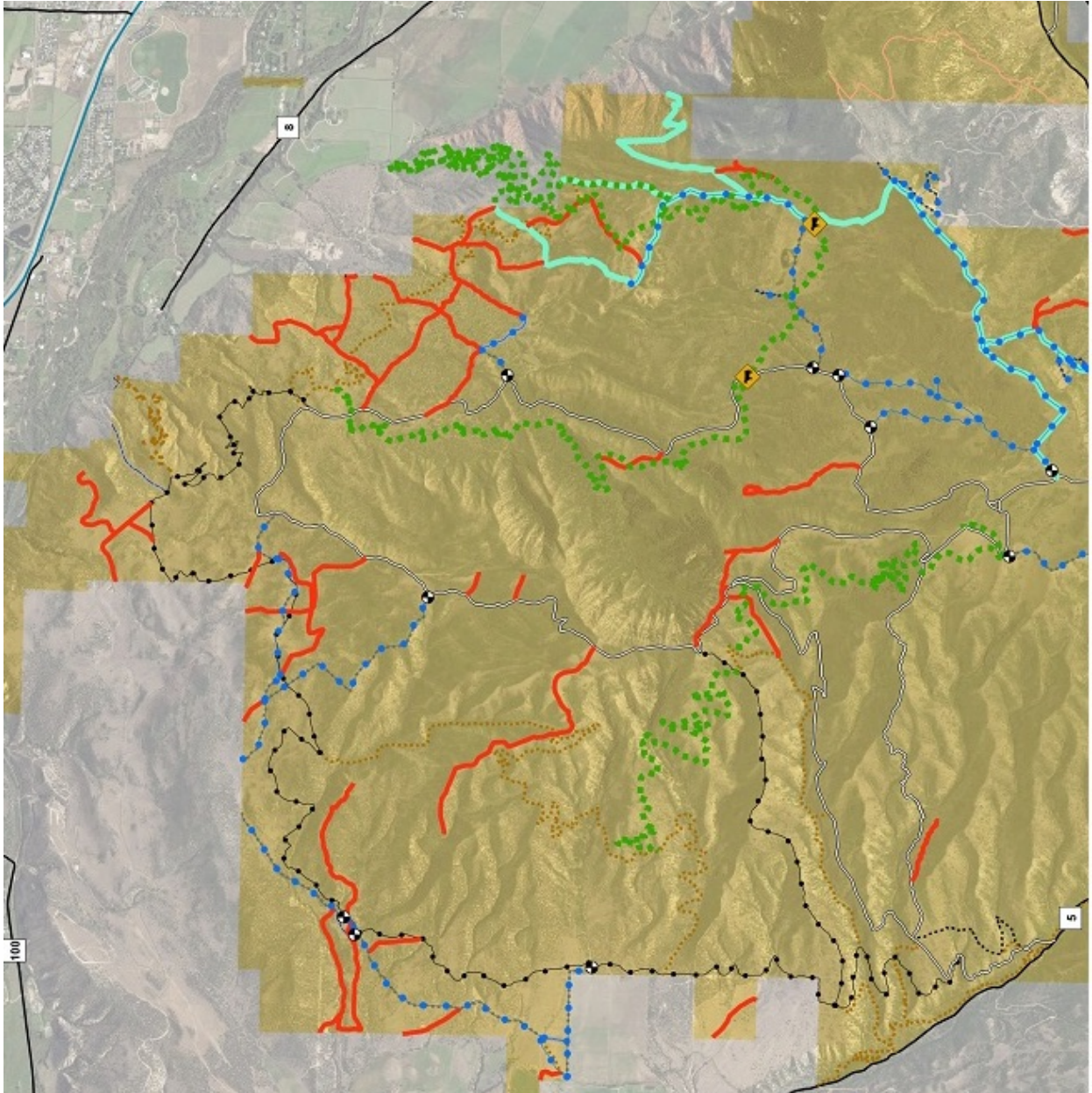
Who are we? The RFVHC equestrian community is comprised of young and old, beginners and experts, amateurs and professionals, owners and riders of all different breeds of horses for an assortment of riding disciplines, including sport to recreation. Currently we represent over 460 members, and over 800 followers who like us on Facebook.

Many thanks for supporting our moto to "Keep Horses on Trails" by providing access through parking. We are extremely appreciative.

Please see the following (8) pages of maps and photos for your orientation.

Most sincerely,
Holly McLain – RFVHCV Communication Chairman

BLM-SRMA Crown phase 2 map showing 9,100 acres
#5 – Prince creek Road, * non-numbered - White two track – The Crown Road #8320 is an existing two track trail, which in itself is a complete trail system in the Middle Country of the Crown. Access from Prince Creek Trail near #5 on map. Excellent trail with good line of sight for all trail users.



The #5 identifies the black line, Prince Creek Road. Next to #5 on the map is the start of a white two track, the Crown Road # 8320. The Middle Country Parking Lot is directly on and part of the white path, two track, immediately off of Prince Creek Road #5.

The entrance to the Middle Country Parking Lot is a left hand turn off of Prince Creek Road, and it needs some work for horse trailers to make the turn into the parking area.

The Middle Country Parking Lot area needs to be enlarged, so that an uphill traveling truck and trailer can pull off of Prince Creek Road on a left-hand turn, then pull into the parking area, swing around, and park facing out. This lot could be similar to what was done for the Glassier Parking Lot.

There should be signs stating no camping, no camper trailers or RVs. The two proposed BLM camp grounds are distant from this parking area. Our understanding is that one campsite is above and one is below this Middle Country Parking Lot on the opposite side of Prince Creek Road.

Here are photos of the Middle Country Parking Lot on the Crown Road #8320.



Winter Wildlife Closure gate on the BLM states "Travel Protections to Protect Wintering Wildlife" and "Critical Winter Wildlife Habitat"



Just past the gate closure, the campfire ring in the middle of this small parking area is just before the Crown Road #8320, which continues on into the Middle Country. The Crown Road #8320 is an existing two track trail, which in itself is a complete trail system in the Middle Country of the Crown.



Left side of the parking area needs to be enlarged. Pulling material from the uphill side of this area can be used as fill to widen the left downhill portion. The large rocks can be pulled from the left side and used to support the right, uphill side of this parking area to prevent erosion, and secure the right, side bank.



The right side of the parking area shows a gentle slope on the uphill side, where the parking area could be enlarged. Fill dirt taken from the uphill side could be pushed to the lower downhill side of the lot to enlarge the area.



Another view of the right, uphill side of this parking area, showing a bike path on the right side near the sign. The two track Crown Road #8320 continues on the left side of this photo.

We hope these photos will help you to understand the parking potential for this area. The above suggestions for parking lot expansion are offered from the rancher's perspective. Ranchers try to minimize expense, time and energy to accomplish projects like this. We do not consider ourselves experts for parking lot reconstruction. Marty & Carter Schlumberger are in the construction and excavation business. Marty Schlumberger is a RFVHC member of the Board of Directors. When the time comes, perhaps Marty Schlumberger could offer his expertise.

Thank you again for your support.
Holly